

Samsung SCX-4300 All In One Printer

Compatible Toner Cartridge Chip Driver Installation Instruction

(Note: Before install the chip driver, please make sure the printer's mainboard is original status, no replace IC or other change.)

When the printer toner out, printer remind: Toner Empty, Replace Toner. It can't print anymore, the printer was locked.



Here we develop a chip solution which can solve the question, install our driver and chip; we can use the compatible toner cartridge again.

Before install our chip driver, there have something need to be attention, very important:

1. The computer already installs 4300 print driver and scan driver.
2. The computer just connect with only one Samsung 4300 printer, other USB links please take them out..
3. Slot the toner cartridge which with our chip into the printer.
4. The whole processes please make sure power on.
5. You only have three chances to run the chip driver.
6. **Windows XP/Windows 2000 can read the driver automatic. Windows Vista need run the driver as an administrator(Open the CD, right click 'cdrun', select 'run as an administrator')**
7. It's better to close the anti-virus software when install the driver, some anti-software mistake the driver as virus.
8. Start the printer, wait it warming up.

Following install our chip driver; put the driver to computer CD-ROM:

A. Run our driver, type password: 4300, Click "Yes".



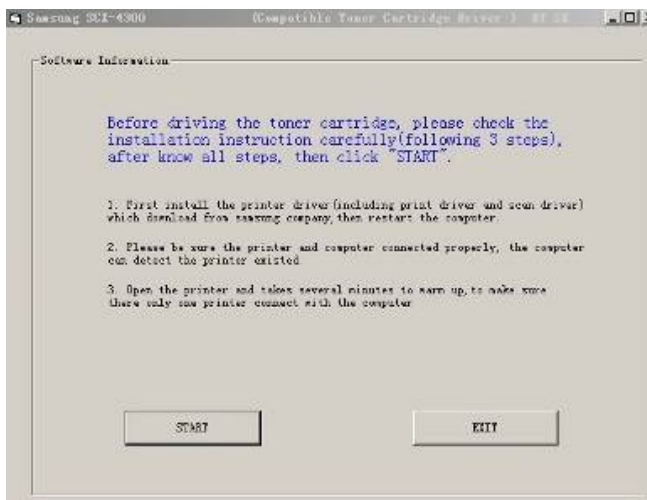
B. Click "installation driver"



C. Select Language “English”



D. Click “START”



E. Then the setup running...



About 10 seconds later, the printer light starts flashing. Waiting about 2 to 5 minutes, the printer control panel will display following:

- a) **PC TO DRAM IS OK** (If display **PC TO DRAM IS NG**, it mean computer and printer can't communicate successfully).
- b) **FLASH IS ERASING**
- c) **FLASH PROGRAMMING.**



Then the printer will restart automatic, chip driver install completed, click “QUIT” to finish the drive.

F: Final necessary step, after installed the driver and printer restarted, wait the printer warming up, manual operation on the control panel:

Menu→10.Maintenance→Clear Settings→All Settings→OK

Then printer light will flash; soon turn to normal green light. Print testing page, show the toner status display 100%. Installation is successful.

Remarks: After chip driver setup, if still show toner low, print a system report to check whether the driver install successful or not. (“Menu→8.Report” prints the system report)

System Data List

Options	Item	Status
Paper Setting		
Paper Type	[Plain Paper/Transparency...]	Plain Paper
Tray Paper	[LTR/A4/LGL]	LTR
Manual Feed	[LTR/A4...]	LTR
Copy Setup		
Default Darkness	[Light/Normal/Dark]	Normal
Default Original Type	[Text/ Text / Photo /Photo]	Text
Default Reduce/Enlarge	[Original/A4->LTR...]	100%
Default Number Of Copy	[1-99]	1
Timeout	[15/30/60/180/Off]	30 Sec
Machine Setup		
Language	[English/FRANCAIS...]	English
Power Save	[5/10/15/30/45/60/Off]	5 Min
USB Mode	[Fast/Slow]	Fast
Toner Save		
Toner Save	[On/Off]	Off
Firmware Version : 1.13fix		
Engine Version : V1.01.25		
Emulation Version : QPDL 1.40 11-14-2005		
Total Page Counts : 3		
Platen Scan Page Counts : 0		
Toner Remaining : 0%		
CRU Prints : 929 Pages		
Supplier : SAMSUNG(INIT)		

If above show “Firmware version: 1.13fix”, it mean installation successful, if not display “fix”, mean chip driver install failure. Please install our chip driver again.